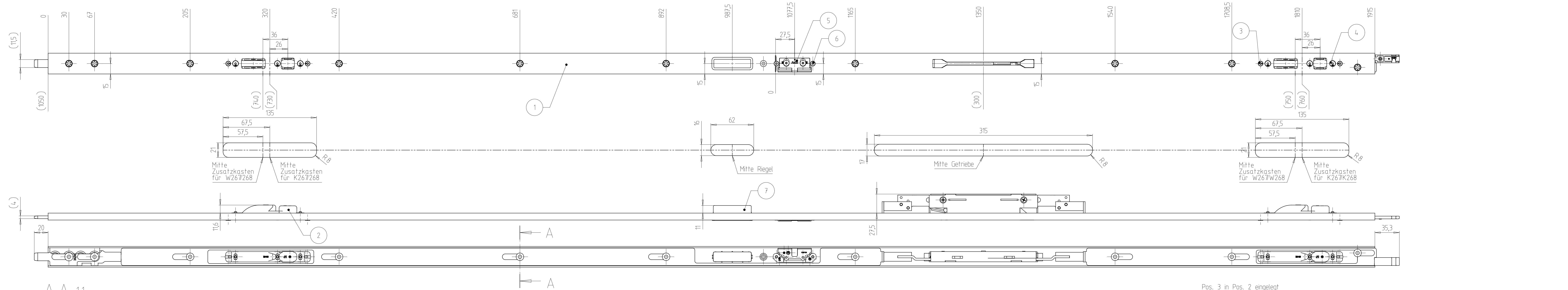
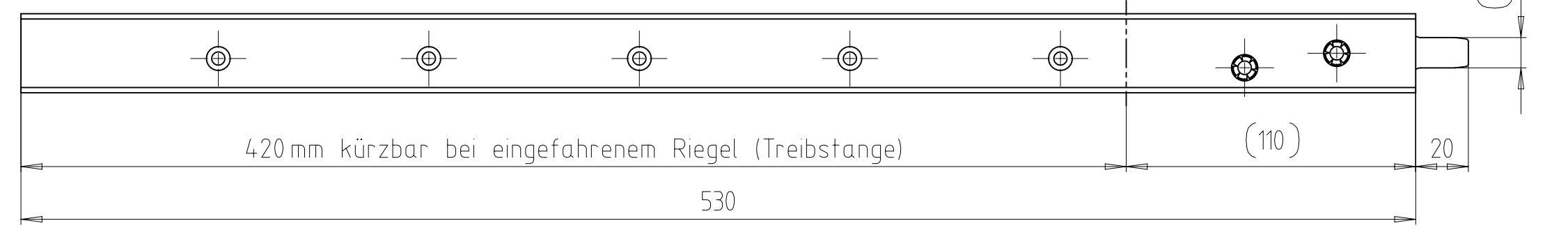


The Drawing and its contents are to be kept secret from third parties, particularly competitors. The drawing and documents which go with it are not to be duplicated either in local or extract, or used in other documentation without express approval. ISO and 3D CAD A reservation of rights in accordance with §2 PatG is declared for the event that a patent is granted.



Verlängerung: SFB BE7750-230



Frästiefe = angegebene Tiefe + min 1 mm

Fräser Ø 16 mm
Anlaufing Ø 27 mm

wie gezeichnet DIN links
spiegelbildlich DIN rechts

Tolerierung nach ISO 8015

Senkausführung siehe WN-0001

Pos. 3 in Pos. 2 eingelegt

Pos. 1 und 2 mit Pos. 4 verschraubt

Pos. 1 und 5 mit Pos. 6 verschraubt

Pos. 7 in Pos. 1 geklipst

Pos	Benennung	Stck	PDM-Nr.	Teil	Bemerk
7	Hinterfuetterung	1	9.806.00080	000	
6	Torx - Schraube M4x6	2	9.741.14.817	000	
5	AT-Stueck kplt.	1	7.803.16209	000	
4	Senkschraube DIN 7991-M4x12	6	9.999.03359	000	
3	Rd..Excenter	4	9.714.00090	000	
2	Schliesskasten komplett	2	7.880.00052	000	
1	Stulpflügelbeschlag	1	7.883.274.68	000	

Qty.	Type of Modification	Zeichnung angepasst	ANT	Drawn	Approved	Date
1			EK1-1905701	M. M.-Bachem	P. Thode	19.03.2021
316386	Volume /mm³	Weight/g	Material-No.	Item-No.	Tool-No.	
		2455,000		SFB B590-230E8QH K267		
	Scale		Tolerance	Part-Description		
	1 : 2		ISO 2768 mK	Stulpflügelbeschlag		
			Additional Notice	Document No.	Doc. Part No.	Revision
				7.883.25557	000	02
				Replacement for :	Test procedure	Status
				Replaced by :		15
						U

