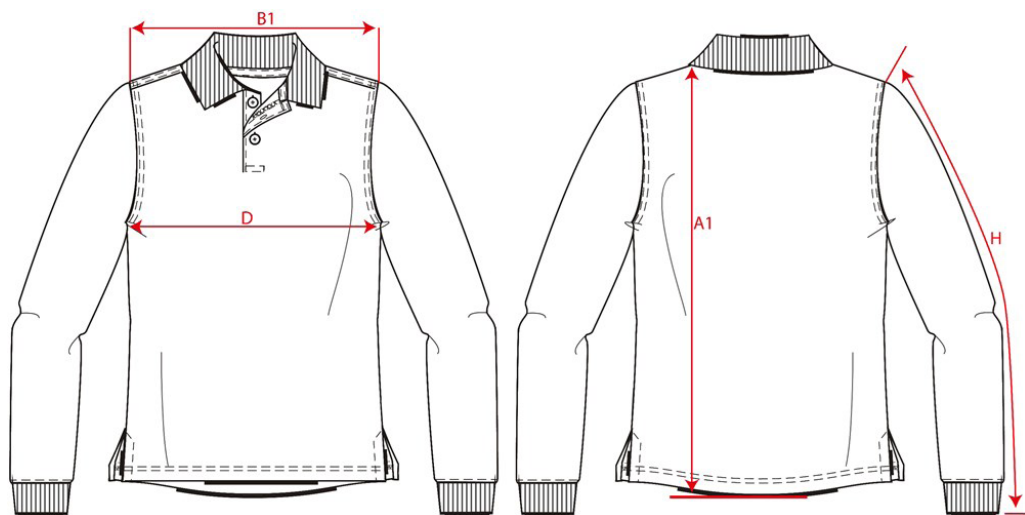


PRODUCTSPECIFICATIE

Poloshirt RWS Birdseye Lange Mouw / 203005



Artikelnummer: 203005
Maten: XS | S | M | L | XL | XXL | 3XL | 5XL | 7XL
Sexe: Unisex
Kwaliteit: 50% Polyester / 50% Polyester, Cooldry
Pasvorm: Basic Fit
Gewicht: 180 g/m²
CBS Nummer: 6109902000
MVO: Circulair; Recyclebaar
Constructie: Birdseye

Kleuren:

Wasvoorschriften:

Kenmerken:

	Tol	XS	S	M	L	XL	XXL	3XL	5XL	7XL	
A1	Total backl meas from hsp	1,0	71,5	73,5	75,5	77,5	79,5	81,5	83,5	87,5	91,5
B1	Shoulder to shoulder	1,0	44,0	46,0	48,0	50,0	52,0	54,0	56,0	60,0	64,0
D	1/2 Chest width (at armhole)	1,0	49,0	52,0	55,0	58,0	61,0	64,0	67,0	73,0	79,0
H	Upperarm sleeve	0,5	62,0	63,0	64,0	65,0	66,0	67,0	68,0	69,0	69,0