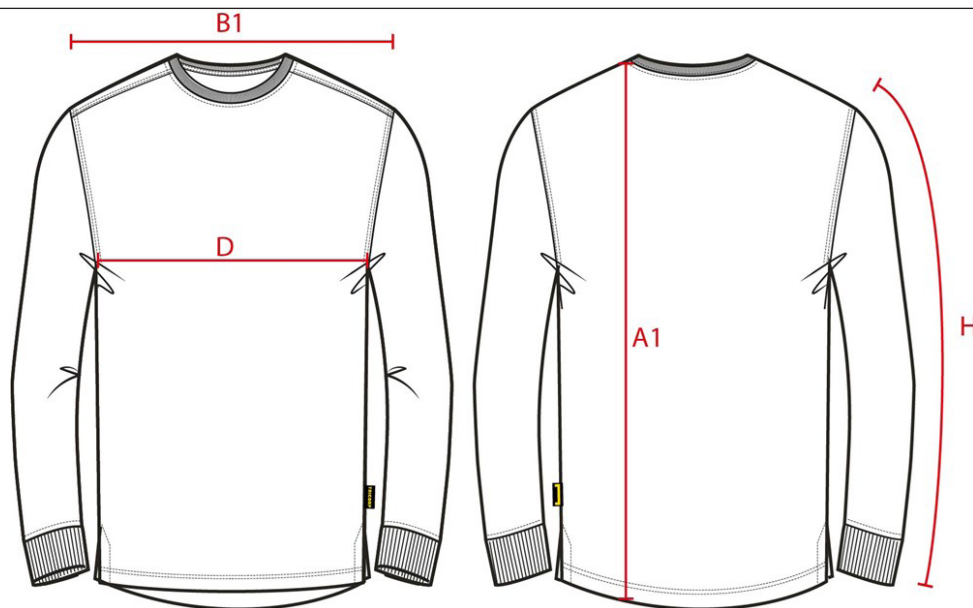


PRODUCTSPECIFICATIE

T-Shirt RWS Birdseye Lange Mouw / 103002



Artikelnummer: 103002
Maten: XS | S | M | L | XL | XXL | 3XL | 5XL | 7XL
Sexe: Unisex
Kwaliteit: 50% Polyester / 50% Polyester, Cooldry
Pasvorm: Basic Fit
Gewicht: 180 g/m²
CBS Nummer: 6109902000
MVO: Circulair; Recyclebaar
Constructie: Birdseye

Kleuren:

Wasvoorschriften:

Kenmerken:

| | Tol | XS | S | M | L | XL | XXL | 3XL | 5XL | 7XL | |
|----|------------------------------|-----|------|------|------|------|------|------|------|------|------|
| A1 | Total backlength meas. from | 1,0 | 71,5 | 73,5 | 75,5 | 77,5 | 79,5 | 81,5 | 83,5 | 87,5 | 91,5 |
| B1 | Shoulder to shoulder | 1,0 | 44,0 | 46,0 | 48,0 | 50,0 | 52,0 | 54,0 | 56,0 | 60,0 | 64,0 |
| D | 1/2 chest width (at armhole) | 1,0 | 49,0 | 52,0 | 55,0 | 58,0 | 61,0 | 64,0 | 67,0 | 73,0 | 79,0 |
| H | Upperarm sleeve | 0,5 | 62,0 | 63,0 | 64,0 | 65,0 | 66,0 | 67,0 | 68,0 | 69,0 | 69,0 |