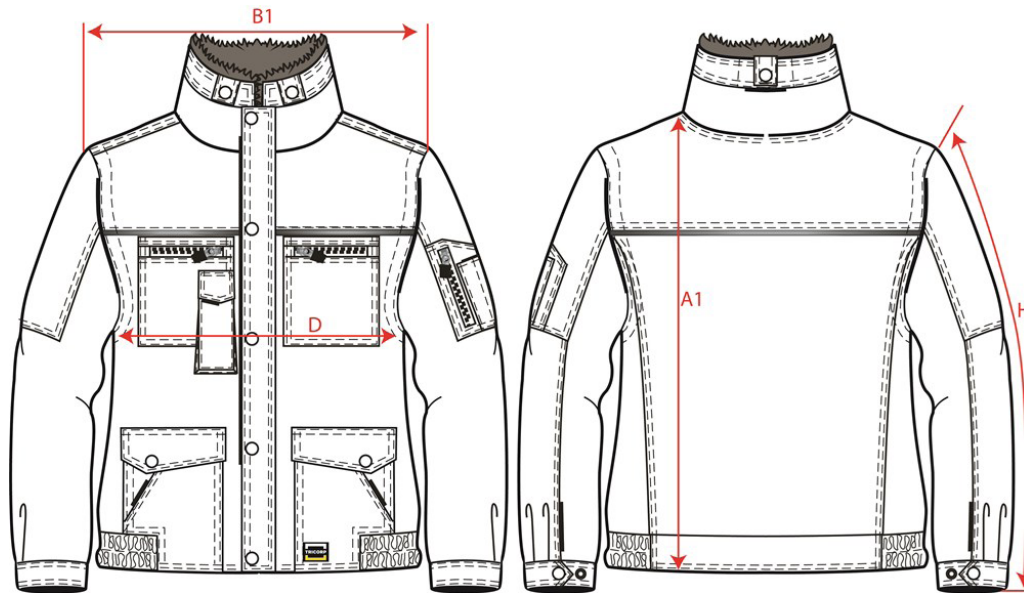


PRODUCTSPECIFICATIE

Pilotjack Industrie / 402005



Artikelnummer: 402005 / TPJ2000
Maten: XS | S | M | L | XL | XXL | 3XL | 4XL | 5XL | 7XL
Sexe: Unisex
Kwaliteit: 70% Polyester / 30% Katoen
Gewicht: 250 g/m²
CBS Nummer: 6201139090
MVO: Oeko Tex®
Constructie: Beaver

Kleuren:

Wasvoorschriften:

Kenmerken:

	Tol	XS	S	M	L	XL	XXL	3XL	4XL	5XL	7XL	
A	Total backl meas. from CBN	1,0	71,0	72,5	74,0	75,5	76,5	77,5	78,5	79,5	80,5	82,5
B1	Shoulder to shoulder	1,0	51,0	52,0	53,0	54,0	55,0	56,0	57,0	58,0	59,0	61,0
D	1/2 Chest width (at armhole)	1,0	64,0	66,0	68,0	70,0	72,0	74,0	76,0	78,0	80,0	84,0
H	Upperarm sleeve (incl cuff)	0,5	65,0	66,0	67,0	68,0	69,0	70,0	71,0	72,0	73,0	73,0