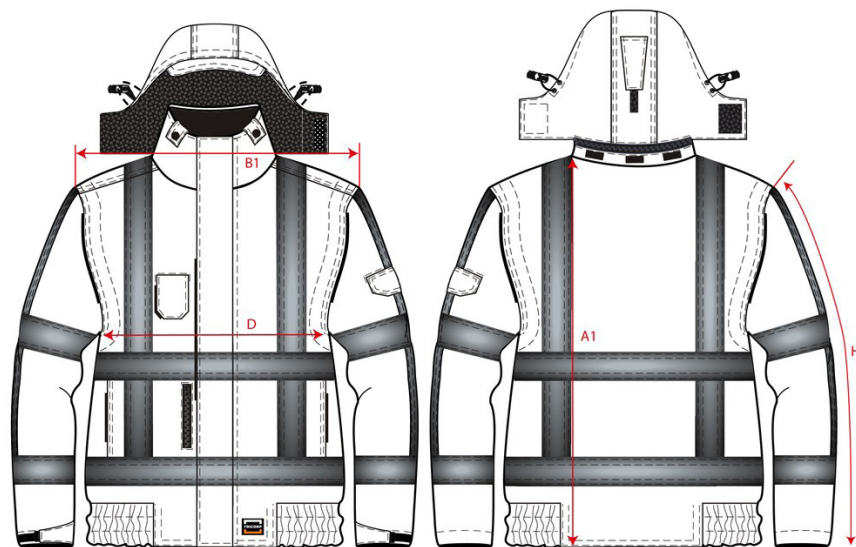


# PRODUCTSPECIFICATIE

Pilotjack RWS / 403006



Artikelnummer: 403006 / TPR3001  
Maten: XS | S | M | L | XL | XXL | 3XL | 4XL | 5XL | 7XL  
Sexe: Unisex  
Kwaliteit: 100% Polyester + PU coating  
Gewicht: 200 g/m<sup>2</sup>  
CBS Nummer: 6201131090  
MVO: Circulair; Recyclebaar  
Constructie: Oxford

Kleuren:

Wasvoorschriften:

Kenmerken:

	Tol	XS	S	M	L	XL	XXL	3XL	4XL	5XL	7XL	
A1	Total backl meas from hsp	1,0	71,0	72,5	74,0	75,5	76,5	77,5	78,5	89,5	80,5	81,5
B1	Shoulder to shoulder	1,0	51,0	52,0	53,0	54,0	55,0	56,0	57,0	58,0	61,0	64,0
D	1/2 Chest width (at armhole)	1,0	64,0	66,0	68,0	70,0	72,0	74,0	76,0	78,0	80,0	84,0
H	Upperarm sleeve	1,0	63,0	64,0	65,5	67,0	68,0	69,0	70,0	71,0	72,0	73,0