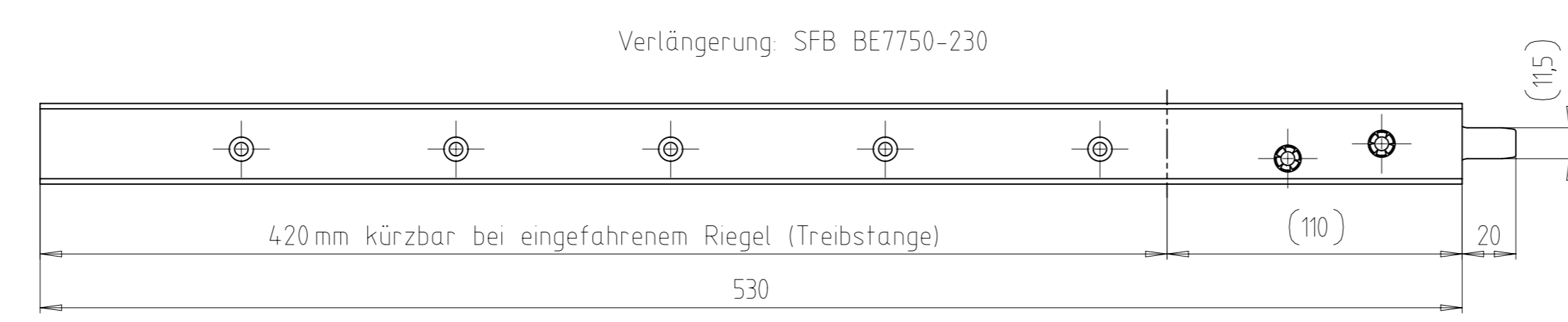
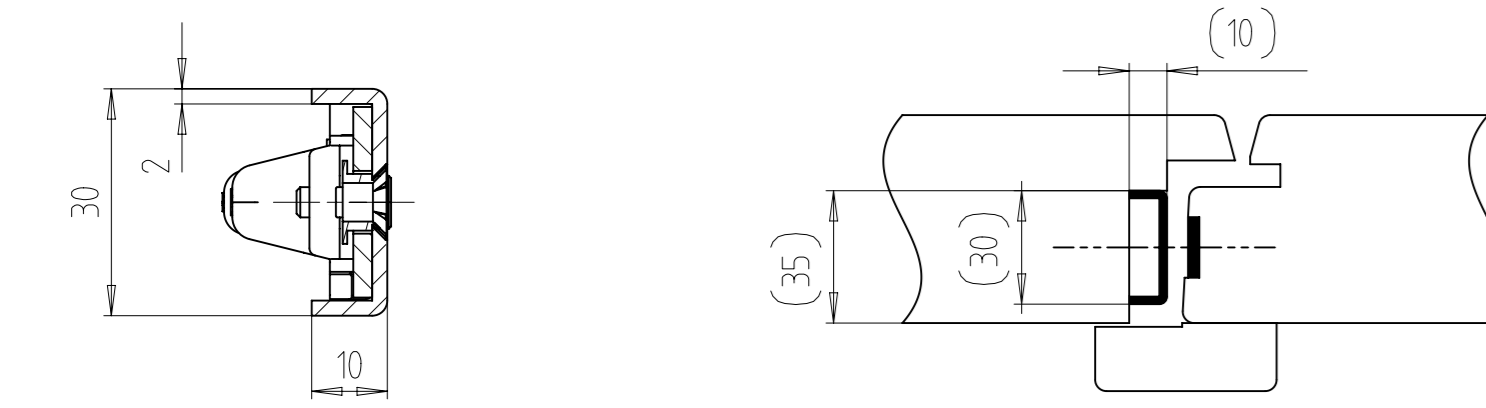
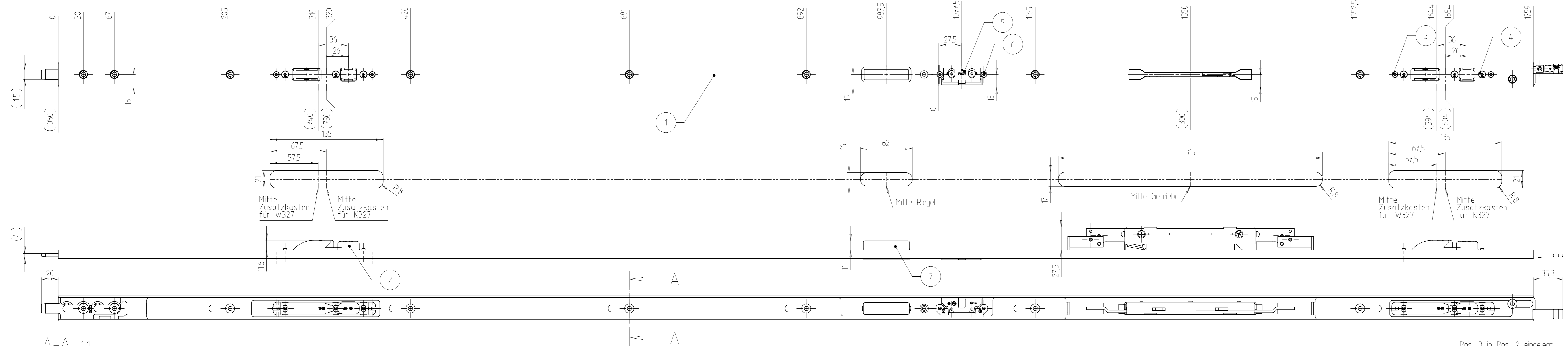


The Drawing and its contents are to be kept secret from third parties, particularly competitors. The drawing and documents which go with it are not to be duplicated either in total or extract, or used in other documentation without express approval. ISO and 3D CAD A reservation of rights in accordance with §12 PatG is declared for the event that a patent is granted.



Frästiefe = angegebene Tiefe + min 1 mm

Fräser \varnothing 16 mm
Anlaufing \varnothing 27 mm

wie gezeichnet DIN links
spiegelbildlich DIN rechts

Tolerierung nach ISO 8015

Senkausführung siehe WN-0001

Pos. 3 in Pos. 2 eingelegt
Pos. 1 und 2 mit Pos. 4 verschraubt
Pos. 1 und 5 mit Pos. 6 verschraubt
Pos. 7 in Pos. 1 geklipst

Pos	Benennung	Stck	PDM-Nr.	Teil	Bemerk
7	Hinterfuetterung	1	9.806.00080	000	
6	Torx - Schraube M4x6	2	9.741.14.817	000	
5	AT-Stueck kpl.	1	7.803.16209	000	
4	Senkschraube DIN 7991-M4x12	6	9.999.03359	000	
3	Rd..Excenter	4	9.714.00090	000	
2	Schliesskasten komplett	2	7.880.00052	000	
1	Stulpflügelbeschlag	1	7.883.27536	000	

Qty.	Type of Modification	Zeichnung angepasst	ANT	Drawn	Approved	Date
1			EK1-1905701	M. Müller-Bachem	P. Thode	19.03.2021
Volume /mm³	Weight/g	Material-No.	Item-No.	Tool-No.		
335010	2600,600		SFB B590-230E8QH B327			
Scale	Tolerance	Part-Description				
1 : 2	ISO 2768 mK	Stulpflügelbeschlag				
Drawn	Date	Document No.	Doc. Part No.	Revision	Status	
M. Müller-Bachem	01.03.2019	7.883.25701	000	02	15	
Appr.	Date	Replacement for :	Test procedure	Size		
S. Baumeister	13.03.2020	Replaced by :		U		

